

EMMET COUNTY CONDOMINIUM SUBDIVISION PLAN NO. 202
 EXHIBIT B
 REPLAT NO. 1
 TO THE AMENDED MASTER DEED OF
QUARRY DUNES

PART OF SECTION 9, T34N, R6W, RESORT TOWNSHIP, EMMET COUNTY,
 MICHIGAN DESCRIBED AS:

DEVELOPER

QUARRY DUNES DEVELOPMENT COMPANY, L.L.C.
 4772 US 131 SOUTH
 PETOSKEY, MICHIGAN 48770

ENGINEER-SURVEYOR

BENCHMARK ENGINEERING INC.
 607 E. LAKE STREET
 HARBOR SPRINGS, MICHIGAN 49740

COMMENCING AT THE EAST 1/4 CORNER OF SECTION 9 T34N, R6W, EMMET COUNTY MICHIGAN; THENCE ALONG THE EAST LINE OF SECTION 9 N 1°20'17"E 1839.79 FEET; THENCE N 88°39'43"W 1204.35 FEET TO THE PLACE OF BEGINNING; THENCE 48.94 FEET ALONG THE ARC OF A CIRCULAR CURVE TO THE LEFT, RADIUS 400.00 FEET, DELTA 6°59'45", CHORD S 13°22'47"W 48.81 FEET; THENCE 189.49 FEET ALONG THE ARC OF A CIRCULAR CURVE TO THE RIGHT, RADIUS 358.85 FEET, DELTA 29°26'05", CHORD S 24°35'58"W 187.41 FEET; THENCE S 39°19'00"W 212.51 FEET; THENCE 215.96 FEET ALONG THE ARC OF A CIRCULAR CURVE TO THE RIGHT, RADIUS 350.00 FEET, DELTA 35°31'00", CHORD S 57°04'30"W 213.50 FEET; THENCE S 74°50'00"W 155.76 FEET; THENCE 169.38 FEET ALONG THE ARC OF A CIRCULAR CURVE TO THE LEFT, RADIUS 241.44 FEET, DELTA 40°11'41", CHORD S 54°24'10"W 155.93 FEET; THENCE 239.58 FEET ALONG THE ARC OF A CIRCULAR CURVE TO THE RIGHT, RADIUS 300.00 FEET, DELTA 57°12'55", CHORD S 63°14'47"W 287.29 FEET; THENCE N 88°08'46"W 247.26 FEET; THENCE N 33°55'00"E 181.46 FEET; THENCE N 65°40'39"E 347.25 FEET; THENCE N 48°55'01"E 604.20 FEET; THENCE N 34°49'42"E 240.03 FEET; THENCE S 54°14'59"E 224.30 FEET TO THE PLACE OF BEGINNING.

SHEET INDEX	COVER
* 1	SURVEY/SITE PLAN
* 2	UTILITY PLAN
* 3	

NOTE: THE ASTERISK (*) AS SHOWN IN THE SHEET INDEX INDICATES AMENDED SHEETS OR ARE NEW SHEETS WHICH ARE REVISED, DATED SEPTEMBER 1, 2016. THESE SHEETS WITH THIS SUBMISSION ARE TO BE SUPPLEMENTAL TO OR REPLACE THOSE SHEETS PREVIOUSLY RECORDED.

REPLAT NO. 1 REMOVES UNITS 5-6 AND UNITS 9-12



Y16278:EXHIBITB,SHEET1.CXD
 CAD FILE NAME 1

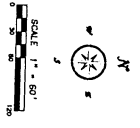
QUARRY DUNES

COVER

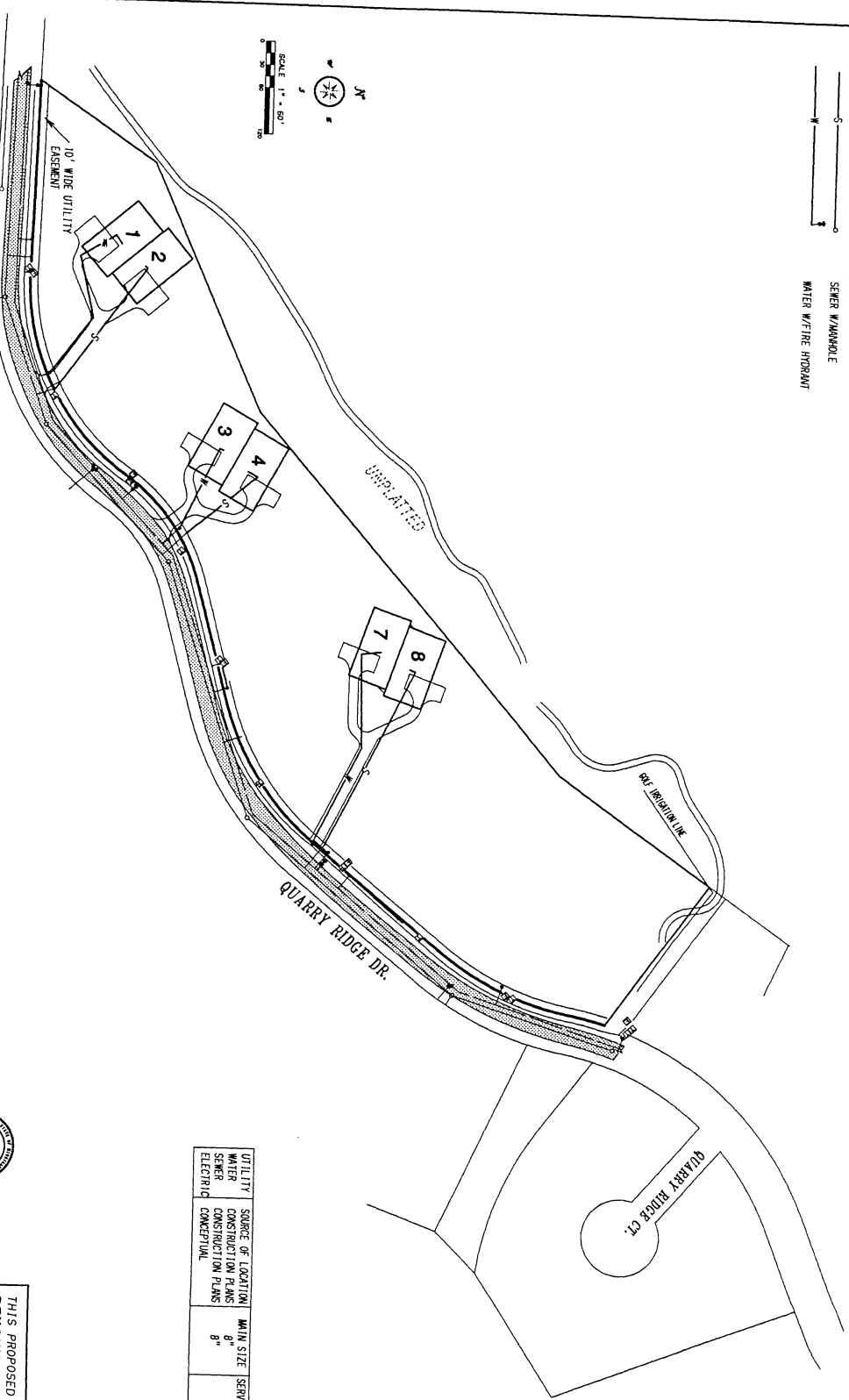
1

THIS PROPOSED SHEET PREPARED BY:
BENCHMARK ENGINEERING, INC.
 607 E. LAKE STREET
 HARBOR SPRINGS, MICHIGAN 49740
James E. Young
 JAMES E. YOUNG, P.S., NO. 24626
 DATE: SEPTEMBER 1, 2016

LEGEND
 ELECTRIC, TELEPHONE, CABLE TV
 SEWER MAIN/POLE
 WATER W/FIRE HYDRANT



ACCESS TO US 31 HIGHWAY
 VIA QUARRY RIDGE DRIVE &
 PRESERVE AREA. SEE MASTER
 DEED FOR EASEMENT DETAIL.



ALL IMPROVEMENTS SHOWN ON THIS SHEET
 SERVING UNITS 1 & 2 "MUST BE BUILT".
 IMPROVEMENTS SHOWN SERVING UNITS 3-4, 7-8
 "MAY NOT BE BUILT".
 MAIN UTILITY LINES ALONG QUARRY
 RIDGE DRIVE "HAVE BEEN BUILT".

UTILITY	SOURCE OF LOCATION	MAIN SIZE	SERVICE SIZE
WATER	CONSTRUCTION PLANS	8"	1 1/2"
SEWER	CONSTRUCTION PLANS	8"	6"
ELECTRIC	CONCEPTUAL		



Y16278; EXHIBIT B, SHEET 3, AND
 CAD FILE NUMBER 1

QUARRY DUNES

THIS PROPOSED SHEET PREPARED BY:
BENCHMARK ENGINEERING, INC.
 607 E. LAKE STREET
 HARBOR SPRINGS, MICHIGAN 49740
 JAMES E. YOUNG, P.E., NO. 24626
 DATE: SEPTEMBER 1, 2016

UTILITY PLAN